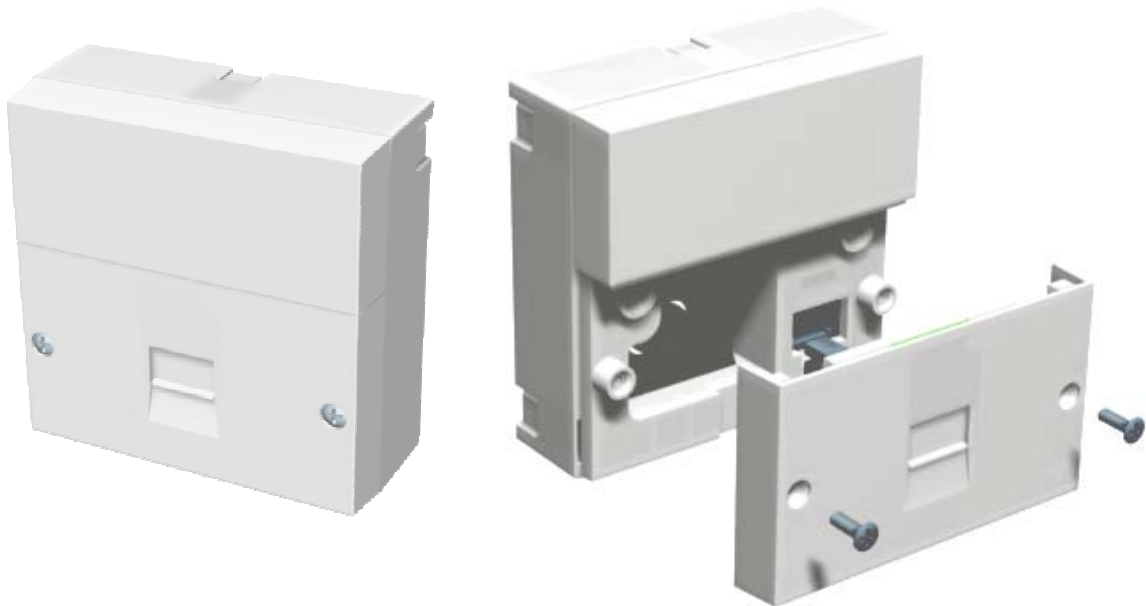


Product Overview

The NTE 5A is the standard method for terminating 2 wire copper lines using BT style connectivity. It features a removable Customer Connection Unit that provides a clear demarcation between the network operator's and customer's wiring.



data sheet

Product Description

The NTE 5A is designed to terminate single copper pair lines in the customer premise.

- Plastics moulded from V0 rated PVC
- 2 way IDC connection of incoming network operator's wiring (LSA style)
- Standard linetest and ringing components provided
- 26A Overvoltage protection included
- 401A Test socket to verify network wiring is good
- 601A socket for customer's equipment connection
- 4 way IDC connector for onward distribution of customer's wiring (LSA style)

It is the accepted within the UK by all network operators that the NTE5A is the preferred method of terminating single pair copper lines within the customer premise.

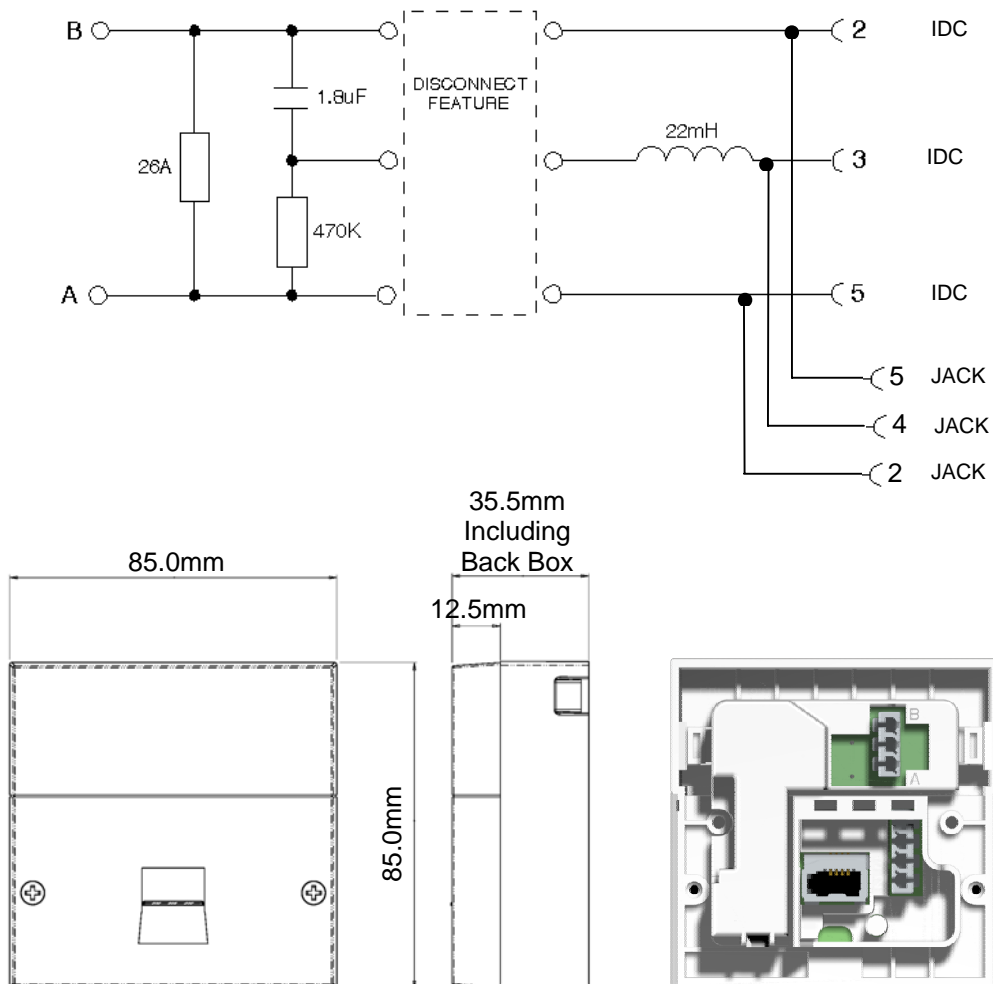
DS 023-2 Network Terminating Equipment 5A (NTE 5A)

Pressac Part Number R20/7983/XX9ID

Circuit Diagram

Network wiring IN

Customer wiring OUT



Features and benefits

- Provides clear demarcation point between network and customer wiring
- Can be surface mounted (with backbox) or flush mounted
- Bellwire filter provided
- M3.5 screws provided
- Will accept other Service Specific Frontplates (SSFPs) such as the ADSL Centralised Filter

Pressac Communications Limited

Glaisdale Drive West, Bilborough, Nottingham NG8 4GY

Tel: +44 (0)115 936 5258 Fax: +44 (0)115 936 5252

E-mail: sales@presscomm.co.uk

Technical Support

Tel: +44 (0)115 936 5238

E-mail: tech_support@presscomm.co.uk



The Pressac website www.presscomm.co.uk has further information on our company, services and products

data sheet